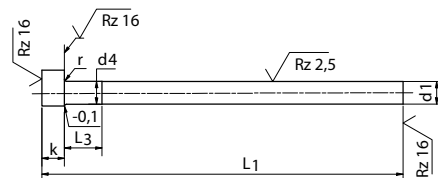
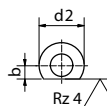


2 Izmetalna igla Ejector Pin

DIN ISO 6751 AH Kaljena / Hardened



Izmetalna igla z enostransko usmeritvijo

Ejector pin with one-sided anti-twist lock

Material:

WS (legirno orodno jeklo za delo v hladnem)

Št. materiala:

1.2516 (120 WV4)
1.2067 (100 Cr6)

Lastnosti materiala:

Kaliilna lastnost pribl.: 200°C / 392°F

Trdota:

Steblo: HRC 60 +4/-2
Glava: HRC 45 +10/-5

Material:

WS (Alloyed cold-work steel)

Material Number:

1.2516 (120 WV4)
1.2067 (100 Cr6)

Material properties:

Hardness characteristics: approx
200 °C / 392 °F

Hardness:

Shank: HRC 60 +4/-2
Head: HRC 45 +10/-5

Ø D1 g6 [mm]	D2 0 -0,2 [mm]	D4 [mm]	K 0 -0,05 [mm]	R +0,2 0 [mm]	Model A002 L1+2 [mm]			L3 [mm]
					160	200	250	
2,00	4	D1+0,03	2	0,2	●		●	5
2,50	5				●		●	
3,00	6		3	0,3	●	●	●	
3,50	7				●		●	
4,00	8				●		●	
4,50					●		●	
5,00	10				●		●	
5,50					●		●	
6,00	12		5	0,5	●	●	●	6
8,00	14				●	●	●	8
10,00	16	D1+0,04			●		●	10
12,00	18		7	0,8	●		●	12



