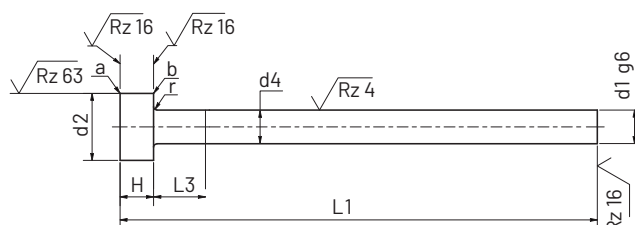


2 Izmetalna igla Ejector Pin

DIN ISO 6751 AH Nerjaveče jeklo / Stainless Steel



a = rob brez robov | edge free of burr
b = zaobljen rob | rounded edge

Izmetalna igla s cilindrično glavo iz nerjavečega jekla.

Ejector pins with cylindrical head from stainless steel.

Obseg uporabe:

Posebej primerna za plastične dele v medicinski in prehranjevalni industriji ter predelavo plastike katera povzroča korozijo.

Dimenzije so prikazane v tabeli.

Prileganje / Toleranca:

Premer D_1

\emptyset	1,5 - 3	3,2 - 6
g6	-0,002	-0,004
	-0,008	-0,012

Material:

Nerjaveča in kislinsko odporna jekla.

Št. materiala:

- 1.4112 (X 90 Cr Mo V 18)
- 1.4125 (X 105 Cr Mo 17)

Lastnosti materiala:

Primerne do najvišje temperature 180°C / 356°F

Trdota:

Steblo: HRC 56 + 2
Glava: HRC 45 ± 5

Obdelava:

Brušeno steblo, vroče kovana cilindrična glava, kaljeno.

Range of application:

Especially suitable for plastic parts in the medical and food industries.

The dimensions are shown in the table.

Fit / Tolerance:

Diameter D_1

\emptyset	1,5 - 3	3,2 - 6
g6	-0,002	-0,004
	-0,008	-0,012

Material:

Stainless and acid resistant steel.

Material Number:

- 1.4112 (X 90 Cr Mo V 18)
- 1.4125 (X 105 Cr Mo 17)

Material properties:

Appropriate to the highest temperature of 180 °C / 356 °F

Hardness:

Shank: HRC 56 + 2
Head: HRC 45 ± 5

Finish:

Ground shank, hot forged cylindrical head, hardened.



Ø D1 g6 - 4 µm [mm]	D2 x H-0,2 / H-0,05 [mm]	R+0,2 [mm]	L1+2 / 0					
			100	125	160	200	250	315
1,00	2,5x1,2	0,2	●	●				
1,50	3x1,5						●	
2,00	4x2		●	●	●	●	●	
2,50	5x2	0,3	●	●	●	●	●	
3,00	6x3		●	●	●	●	●	●
3,50	7x3		●	●	●	●	●	
4,00	8x3		●	●	●	●	●	●
4,50			●	●	●	●	●	
5,00	10x3		●	●	●	●	●	●
5,50			●	●	●	●	●	
6,00	12x5	0,5	●	●	●	●	●	●
6,50							●	
7,00							●	
8,00	14x5		●	●	●	●	●	●
10,00	16x5		●	●	●	●	●	
12,00	18x7	0,8	●	●	●	●	●	