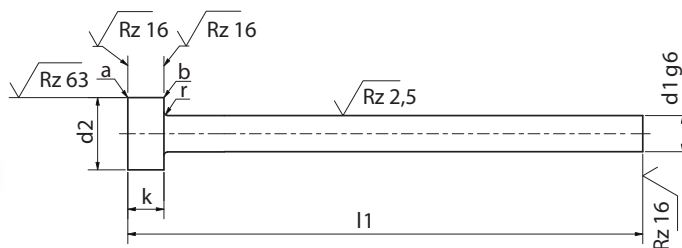


# 2 Izmetalna igla | Za jedra

## Ejector Pin | Core Pin

**DIN ISO 6751 A**  
Nenitirana / Unnitrited



a = rob brez robov | edge free of burr  
b = zaobljen rob | rounded edge

### Nenitirana trša izmetalna igla za jedra.

Unnitrited High Tempered Ejector Core pin.

#### Opomba | Note

Večina dimenzij igel je na zalogi v skladišču.

Most of the dimensions are in stock.

#### Material:

WAS orodno jeklo za vroče preoblikovanje.  
Na voljo tudi v drugih materialih.

#### Št. materiala:

- 1.2343 (X 38 Cr Mo V 5-1)
- 1.2044 (X 40 Cr Mo V 5-1)

#### Karakteristike:

Napustna obstojnost do 600°C / 1112°F

#### Trdota:

Steblo: HRC pribl. 53  
Glava: HRC pribl. 45

#### Material:

WAS hot working tool steel.  
Available in other materials.

#### Material Number:

- 1.2343 (X 38 Cr Mo V 5-1)
- 1.2044 (X 40 Cr Mo V 5-1)

#### Material properties:

Resistant up to 600 °C / 1112 °F

#### Hardness:

Shank: HRC ca 53  
Head: HRC ca 45

Ø D <sub>1</sub> g6 - 4 μm [mm]	D <sub>2</sub> × H <sub>-0,2</sub> / H <sub>-0,05</sub> [mm]	R <sub>+0,2</sub> [mm]	L <sub>1</sub>	L1+2 / 0				
				160	200	250	315	400
2,00	4x2	0,2	5	●		●		
2,10	5x2	0,3		●		●		
3,00	6x3			●		●		
3,50	7x3			●		●		
4,00	8x3				●			●
4,50					●			●
5,00	10x3				●			●
5,50					●			●
6,00	12x5	0,5	6		●			●
6,50					●			●
7,00					●			●
7,50					●			●
8,00	14x5		8		●			●
10,00	16x5		10		●			●
12,00	18x7	0,8	12		●			●
16,00	22x7		16		●			●



