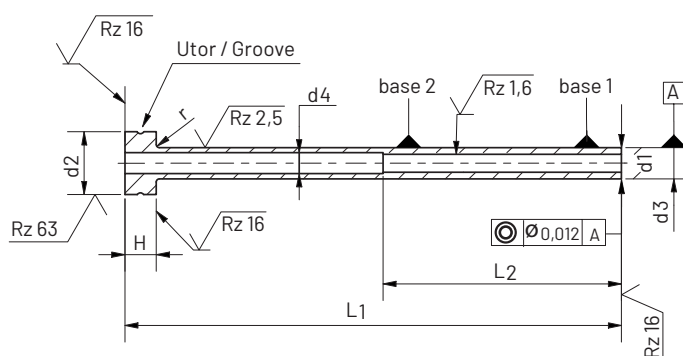


2 Izmetalna tulka Ejector Sleeves

DIN ISO 8405
Nitrirana / Nitrited



Nitrirana in polirana izmetalna tulka s cilindrično glavo.

Nitrided and polished
ejector sleeve with
cylindrical head.

Opomba | Note

Na zahtevo so izmetalne tulke dobavljive skupaj z jedri ali iglami. Prosimo navedite ob naročilu. Igle so približno 50 mm daljše od tulk. Izmetalne tulke so glede na povpraševanje dobavljive tudi z reducirnim delom.

Izdelamo tudi dimenzije po želji naročnika.

Ejector sleeves can be purchased together with internal thread or the pins. Please quote on the order. Pins are approximately 50 mm longer than the sleeves. Ejector sleeves are also available with the reduced point.

Customised gradings are also available ba special order.

Obseg uporabe:

Za izmet oblikovnih delov iz orodja za tlačno litje ali brizganje plastike, posebej za visoko se taleče legure. Izmetalne tulke prevzamejo funkcijo izmetača in oblikuje del nad oblikovnimi jedri.

Dimenzije so prikazane v tabeli.

Prileganje / Toleranca:

Notranji premer D_1

\varnothing	1,5 - 3	3,2 - 6	6,2 - 10	12
h5	-0,004	-0,005	-0,006	-0,008

Premer stebila D_2

\varnothing	3	4 - 6	8 - 10	12 - 16
g6	-0,002	-0,004	-0,005	-0,006
	-0,008	-0,012	-0,014	-0,017

Odprta luknja $D_{3-0,1}$ / celotna dolžina L_{+1} / vodilna dolžina L_{+1}

Material:

WAS - Orodno jeklo za delo v vročem, primerno za nitriranje.

Št. materiala:

1.2343 (x38 Cr Mo V5-1)
1.2344 (x 40 Cr Mo V5-1)

Karakteristike:

Obstojnost do 600°C / 1112°F

Range of application:

Injection moulding and die-casting, especially for high melting alloys. Ejector sleeve takes over the function of ejector.

The dimensions are shown in the table.

Fit / Tolerance:

The inner diameter D_1

\varnothing	1,5 - 3	3,2 - 6	6,2 - 10	12
h5	-0,004	-0,005	-0,006	-0,008

Stem diameter D_2

\varnothing	3	4 - 6	8 - 10	12 - 16
g6	-0,002	-0,004	-0,005	-0,006
	-0,008	-0,012	-0,014	-0,017

Open hole $D_{3-0,1}$ / total length L_{+1} / leader length L_{+1}

Material:

WAS - Hot-work tool steel, suitable for nitriding.

Material Number:

1.2343 (X38 Cr Mo V5-1),
1.2344 (X 40 Cr Mo V5-1)

Material properties:

Resistant up to 600 °C / 1112 °F



Trdota:

Steblo: ~950 HV 0,3 na površini
 Natezna trdnost jedra pribl.
 1400 N/mm²

Glava: HRC 45 +10/-5

Hardness:

Shank: ~950 HV 0,3 on surface
 Core tensile strength
 approx.

1400 N/mm²

Head: HRC 45 +10/-5

Obdelava:

Steblo nitrirano in fino brušeno,
 vodilna luknja brušena, nitrirano,
 vroče kovana cilindrična glava,
 korozijsko odporno.

Finish:

Shank nitrided and precision ground,
 brushed hole lead, nitrided, hot forged
 cylindrical head, non corrosive.

Ø D1 H5 [mm]	Ø D2 g6 [mm]	Ø D3 -0,1 [mm]	D4 x H -0,2 -0,05 [mm]	R +0,2 [mm]	L2+1 [mm]	Model HH01 L1+1 [mm]																		
						50	60	75	100	125	150	175	200	225	250	275	300	325	400					
1,5	3,0	1,8	6 x 3	0,3	35	●	●	●	●	●	●	●												
1,6		1,9					●	●	●	●	●	●												
1,7		2,0							●	●														
2,0	4,0	2,5(2,4)	8 x 3				●	●	●	●	●	●	●	●	●	●								
2,2							●	●	●	●	●	●	●	●	●									
2,5	5,0	3,0	10 x 3				●	●	●	●	●	●	●	●	●	●								
2,7							●	●	●	●	●	●	●	●	●	●								
3,0		3,5(3,3)			45		●	●	●	●	●	●	●	●	●	●	●							
3,2							●	●	●	●	●	●	●	●	●	●	●							
3,5	6,0	4,0	12 x 5	0,5			●	●	●	●	●	●	●	●	●	●	●	●	●	●	●	●	●	●
3,7							●	●	●	●	●	●	●	●	●	●	●	●	●	●	●	●	●	●
4,0		4,5(4,3)					●	●	●	●	●	●	●	●	●	●	●	●	●	●	●	●	●	●
4,2							●	●	●	●	●	●	●	●	●	●	●	●	●	●	●	●	●	●
4,5		5,0					●	●	●	●	●	●	●	●	●	●	●	●	●	●	●	●	●	●
4,0	8,0	4,5(4,3)	14 x 5				●	●	●	●	●	●	●	●	●	●	●	●	●	●	●	●	●	●
4,2							●	●	●	●	●	●	●	●	●	●	●	●	●	●	●	●	●	●
4,5		5,0					●	●	●	●	●	●	●	●	●	●	●	●	●	●	●	●	●	●
5,0		5,5(5,3)					●	●	●	●	●	●	●	●	●	●	●	●	●	●	●	●	●	●
5,2							●	●	●	●	●	●	●	●	●	●	●	●	●	●	●	●	●	●
5,5		6,0					●	●	●	●	●	●	●	●	●	●	●	●	●	●	●	●	●	●
6,0	10,0	6,5(6,3)	16 x 5				●	●	●	●	●	●	●	●	●	●	●	●	●	●	●	●	●	●
6,2							●	●	●	●	●	●	●	●	●	●	●	●	●	●	●	●	●	●
6,5									●	●	●	●	●	●	●	●	●	●	●	●	●	●	●	●
7,0		7,5								●	●	●	●	●	●	●	●	●	●	●	●	●	●	●
8,0	12,0	8,5(8,3)	20 x 7	0,8			●	●	●	●	●	●	●	●	●	●	●	●	●	●	●	●	●	●
8,2							●	●	●	●	●	●	●	●	●	●	●	●	●	●	●	●	●	●
8,5		9,0							●	●	●	●	●	●	●	●	●	●	●	●	●	●	●	●
9,0		9,3							●	●														
10,0	14,0	10,5	22 x 7				●	●	●	●	●	●	●	●	●	●	●	●	●	●	●	●	●	●
10,5		11,0					●	●	●	●	●	●	●	●	●	●	●	●	●	●	●	●	●	●
11,0		11,5					●	●	●	●	●	●	●	●	●	●	●	●	●	●	●	●	●	●
11,5		12,0					●	●	●	●	●	●	●	●	●	●	●	●	●	●	●	●	●	●
12,0	16,0	12,5					●	●	●	●	●	●	●	●	●	●	●	●	●	●	●	●	●	●
12,5		13,0					●	●	●	●	●	●	●	●	●	●	●	●	●	●	●	●	●	●
14,0	18,0	14,5	24 x 7				●	●	●	●	●	●	●	●	●	●	●	●	●	●	●	●	●	●
16,0	20,0	16,5	26 x 8	1,0	50				●	●					●	●	●							