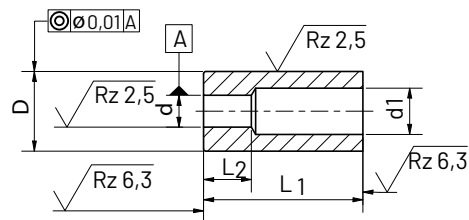


3 Rezilna matrica Cutting Bush

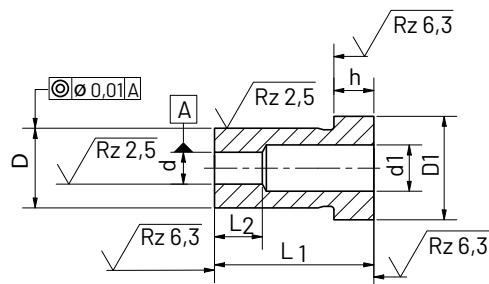
DIN 8977 A/B



A



B



Rezilne matrice po standardu, tip A - brez glave in tip B - z glavo.

To standard type A - headless and type B - with head.

Dimenzije so prikazane v tabeli.

Tipi:

Tip A - rezilna matrica s cilindričnim premerom, kaljena, napuščena in brušena.

Tip B: matrica z glavo, kaljena, napuščena in brušena.

Material:

HSS (Hitrorezna jekla)

Na voljo tudi v drugih materialih. Poglejte tabelo.

Št. materiala:

- 1.3343(S 6-5-2)

Lastnosti materiala:

HSS: Za obdelovanje zelo trdnih ali težavnih materialov. Izjemna odpornost na drgnjenje, visoka natezna trdnost in visoka odpornost.

The dimensions are shown in the table.

Types:

A: with cylindrical external diameter, hardened, tempered and ground finished

B: with head, hardened, tempered and grounded.

Material:

HSS (High speed steels)

Other materials available on request, see material table.

Material Number:

- 1.3343(S 6-5-2)

Material properties:

HSS: For processing very solid or difficult materials. Exceptional abrasion resistance, high tensile strength and high resistance.

Opomba | Note

Upoštevati je potrebno razmik med rezilno iglo in matrico.

Consider the clearance between the piercing punch and the bush.



d1 H8	Stopnjevanje Gradation	D A: n5 B: m5	D1 0 -0,25	d1 max	L2	h + 0,25 0,	L1 +0,5 0,			
							16	20	25	32
1,0 - 2,4	0,1	5	8	2,8	2	5	●	●	●	
1,6 - 3,0		6	9	3,5	3		●	●	●	
2,0 - 3,5		8	11	4,0	4		●	●	●	●
2,5 - 5,0		10	13	5,8	4-8		●	●	●	●
3,0 - 5,0								●	●	●
4,0 - 7,0		13	16	8,0	5-8			●	●	●
4,0 - 7,2								●	●	●
6,0 - 8,8		16	19	9,5				●	●	●
6,0 - 9,0								●	●	●
7,5 - 11,3		20	23	12,0	8-20			●	●	●
8,0 - 11,0								●	●	●
10,7 - 16,0		25	28	17,3				●	●	●
11,0 - 16,6								●	●	●
15,0 - 20,0	0,5	32	35	20,7				●	●	●
18,0 - 27,0		40						●	●	●
19,0 - 27,0			43	27,7				●	●	●
26,0 - 36,0		50	53	37,0				●	●	●

Gradacija / Gradation: 16,6 mm and D: 25,0 mm = 0,1 mm

Gradacija / Gradation: 15,0 mm and D: 32,0 mm = 0,5 mm

Upoštevati je potrebno razmik med rezilno iglo in matrico.

Consider cutting clearance for the assignment of cutting punches and die bushes!