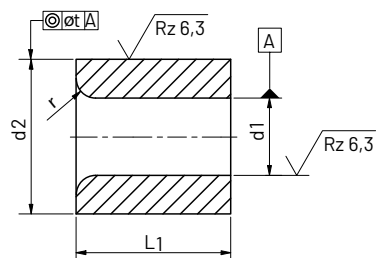


3 Vodilne matrica Punch Guide Bush

ISO 8978



Vodilna matrica.

Punch guide bush.

Dimenzije so prikazane v tabeli.

Material:

Jeklo, ki ga po presoji določi proizvajalec.

Trdota:

740 ± 40 HV 10
HRC 62 ± 2

Obdelava:

Notranjost in zunaj fino brušeno v tolerancah, posneti robovi.

The dimensions are shown in the table.

Material:

Case-hardened steel as chosen by manufacturer

Hardness:

HRC 62 ± 2

Finish:

Inside and outside grinded in tolerance, with insertion chamfer.

Opomba | Note

Bodite pozorni, ker pri rezilni igli standarda ISO 8020 / 8021 ne moremo zagotoviti primerne razmika - skladnosti prileganja. Standard naj bi bil revidiran.

Please consider ISO 8020 / 8021 that no clearance fit can be assured. The standard is going to be revised.



d1 H6	Stopnjevanje Gradiation	d2 n6	L1	r	t
1,0 - 2,3	0,1	5	8,0	1	0,01
1,6 - 3,0		6	12,5		
2,0 - 3,5		8		1,5	
3,0 - 5,0		10	16,0	2,0	
4,0 - 7,2		13			
6,0 - 8,8		16	20,0		
7,5 - 11,3		20		2,5	
11,0 - 16,6		25	25,0		
15,0 - 20,0	0,5	32		4,0	
18,0 - 27,0		40	32,0		
26,00 - 36,00		50	40,0		