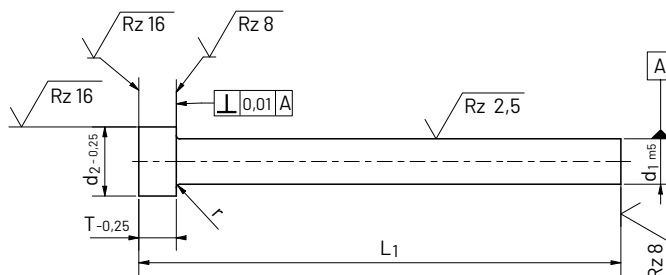


3 Prebijalna igla Cutting Punch

ISO 8020 A



Precizna izvedba rezilne igle s cilindričnima stebлом in glavo, brušeno.

Precision designed Punch Cutting Pin with cylindrical shank and head, plunge cut ground.

Obseg uporabe:

V rezilnih orodjih za rezanje lukenj v plošče (perforacija).

Dimenzije so prikazane v tabeli.

Prileganje / Toleranca:

premer stebła d1, dolžina L+1

| Ø | 3 | 4+5+6 | 8+10 | 13+16 | 20+25 | 32 |
|----|--------|--------|--------|--------|--------|--------|
| M5 | +0,006 | +0,009 | +0,012 | +0,015 | +0,017 | +0,020 |
| | +0,002 | +0,004 | +0,006 | +0,007 | +0,008 | +0,009 |

Material:

HWS (visoko legirano orodno jeklo za delo v hladnem; vsebuje 12% kroma) / **HSS** (hitrorezno jeklo) HSS (Hitrorezna jekla)

HWS* (Jeklo za hladno preoblikovanje)

* Na voljo samo v omejenem številu iz zaloge.

Št. materiala:

- 1.2343 X38CrMoV5-1
- 1.3343 (S 6-5-2)

Karakteristike:

HWS: visoka trpežnost, dolga življenjska doba

HSS: ekstremno visoka trpežnost, za materiale s katerimi se težko dela. Velika odpornost proti obrabi. Visoka natezalna trdnost, visoka odpornost proti vročini.

Range of application:

In cutting tools for cutting holes in the plate (perforation).

The dimensions are shown in the table.

Fit / Tolerance:

Shank nominal diameter d1, length L+1

| Ø | 3 | 4+5+6 | 8+10 | 13+16 | 20+25 | 32 |
|----|--------|--------|--------|--------|--------|--------|
| M5 | +0,006 | +0,009 | +0,012 | +0,015 | +0,017 | +0,020 |
| | +0,002 | +0,004 | +0,006 | +0,007 | +0,008 | +0,009 |

Material:

HWS (High alloy cold working steel; approx. 12% Chrome) / **HSS** (High speed steels)

HWS* (Cold working tool steel)

* Only available in limited numbers in HWS from stock.

Material Number:

- 1.2343 X38CrMoV5-1
- 1.3343 (S 6-5-2)

Material properties:

HWS: High durability, long life

HSS: Extremely high durability for materials which are difficult to work with. High abrasion resistance. High tear strength, high heat resistance.

Opomba | Note

HSS igle so lahko na zahtevo prevlečene s posebno prevleko. Možne so tudi igle iz volfram karbida (hartmetall).

HSS punch pins can be coated with a special coating upon request. Tungsten carbide (hartmetall) coating possible.



Trdota:

 Steblo **WS 60-64, HSW 60-64**

 Glava **WS 40-50, HSW 45-55**
Hardness:

 Shank **WS 60-64, HSW 60-64**

 Head **WS 40-50, HSW 45-55**
Obdelava:

Kaljeno, popuščeno, 60° stožčasta vroče kovana glava, naknadno brušeno po celotni dolžini, vključno z glavo.

Finish:

A hardened, tempered, 60° conical hot forged head, subsequently ground along its entire length, including the head.

| Ø d1 m5 | Ø d2-0,25 | r ±0,1 | T+0,25 | L+1 | | | | | | |
|---------------|--------------|--------|--------|-----|----|----|----|-----|-----|-----|
| | | | | 63 | 71 | 80 | 90 | 100 | 120 | 130 |
| 1,5 | 3 | 0,2 | 3 | | | | | • | | |
| 1,5 | | | 5 | | | | | • | | |
| 2 | 4 | | 3 | | | | | • | | |
| 2 | | | 5 | | | | | • | | |
| 2,5 | 5 | | 3 | | | | | • | | |
| 2,5 | | | 5 | | | | | • | | |
| 3 | | | 3 | • | • | • | • | • | | |
| 3 | | | 5 | • | • | • | • | • | | |
| 3,5 | 6 | | 3 | | | | | • | | |
| 3,5 | | | 5 | | | | | • | | |
| 4 | | | 3 | • | • | • | • | • | • | |
| 4 | | | 5 | • | • | • | | • | | • |
| 4,5 | 7 | | 3 | | | | | • | | |
| 4,5 | | | 5 | | | | | • | | |
| 5 | 8 | 0,3 | | • | • | • | • | • | • | |
| 5,5 | 6 | | | | | | | • | | |
| 6 | 9 | | | • | • | • | • | • | • | |
| 6,5 | 10 | | | | | | | • | | |
| 7 | | | | | | | | • | | |
| 7,5 | 11 | | | | | | | • | | |
| 8 | | | | • | • | • | • | • | • | • |
| 8,5 | 12 | | | | | | | • | | |
| 9 | | | | | | | | • | | |
| 10 | 13 | | | • | • | • | • | • | • | • |
| 11 | 14 | 0,4 | | | | | | • | | |
| 12 | 15 | | | | | | | • | | |
| 13 | 16 | | | • | • | • | • | • | • | |
| 16 | 19 | | | • | • | • | • | • | • | |
| 20 | 23 | | | • | • | • | • | • | • | |
| 25 | 28 | | | • | • | • | • | • | • | |
| 32 | 35 | | | | • | • | • | • | | |