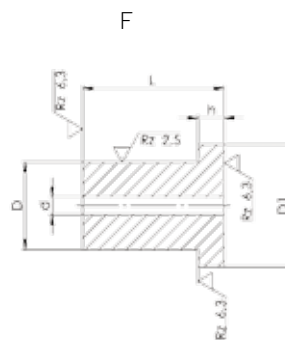
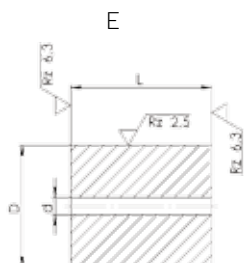


3 Rezilna matrica Cutting Bush

DIN 8977 E/F



Rezilna matrica z začetno izvrtino skozi kos.

Dies with continuous starter hole.

Dimenzije so prikazane v tabeli.

Tipi:

E: kaljene in utrjene, zunaj polirane znotraj toleranc s poševnino

F: kaljene in utrjene, zunaj polirane znotraj toleranc s poševnino

Material:

HSS (Hitrorezna jekla)

Na voljo tudi v drugih materialih. Poglejte tabelo matererialov.

Št. materiala:

- 1.3343(S 6-5-2)

Lastnosti materiala:

HSS: Za obdelovanje zelo trdnih ali težavnih materialov. Izjemna odpornost na drgnjenje, visoka natezna trdnost in visoka odpornost na vročino.

Trdota:

HRC 62 ± 2

The dimensions are shown in the table.

Types:

E: hardened and tempered, outside polished in tolerance, with introduce chamfer

F: hardened and tempered, outside polished in tolerance, with introduce chamfer

Material:

HSS (High speed steels)

Other materials available on request, see material table.

Material Number:

- 1.3343(S 6-5-2)

Material properties:

HSS: For processing very solid or difficult materials. Exceptional abrasion resistance, high tensile strength and high resistance on heat.

Hardness:

HRC 62 ± 2

Opomba | Note

Profil diagonale je max d1 na kvadratnih in pravokotnih matricah.

The diagonal profile should not be larger than max. d1 on dies for square and rectangular forming.



d	D Type E n 5 Type F m 5	D1 0 - 0,25	d1 max	h +0,25 0	L + 0,5 0						
					20	22	25	28	30	32	35
1,0	8	11	4	5,0	●	●	●	●	●	●	●
1,0	10	13	5,8		●	●	●	●	●	●	●
1,2	13	16	8		●	●	●	●	●	●	●
1,2	16	19	9,5		●	●	●	●	●	●	●
1,5	20	23	12		●	●	●	●	●	●	●
1,5	25	28	17,3		●	●	●	●	●	●	●
1,5	32	35	20,7		●	●	●	●	●	●	●
1,5	40	43	27,7				●	●	●	●	●
1,5	50	53	37							●	●