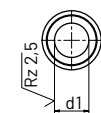


3 Prebijalna igla Cutting Punch

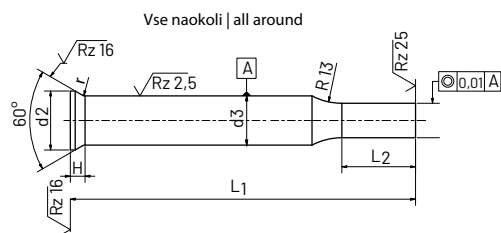
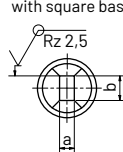
DIN 9861 C



z okroglo osnovo
with round base



s kvadratno osnovo
with square base



Rezilna igla z ugreznjeno glavo in različnimi reducirnimi oblikami.

Punch with countersunk head and various reduced points.

Dimenzije so prikazane v tabeli.

Tipi:

Tip CS - reducirni del v obliki kvadrata

Tip CR - reducirni del v obliki pravokotnika

Tip CO - reducirni del v obliki ovala

Material:

HWS (visoko legirno jeklo za delo v hladnem - 12% krom) / **HSS** (hitrorezno jeklo) / **Vanadis 23** / **CPM 10V**

Karakteristike:

HWS: visoka trpežnost, dolga življenjska doba

HSS: ekstremno visoka trpežnost, za materiale s katerimi se težko dela. Velika odpornost proti abraziji, visoka natezalna trdnost, visoka odpornost proti vročini.

Trdota:

Steblo: HWS 60-64, HSS 62-66

Glava: HWS 45-55, HSS 45-55

The dimensions are shown in the table.

Types

Type CS - square stepped shaft

Type CR - rectangular stepped shaft

Type CO - round elongated stepped shaft

Material:

HWS High alloy cold working steel (approx. 12% Chrome) / **HSS** (HSS steel) / **Vanadis 23** / **CPM 10V**

Material properties:

HWS: High durability, long life

HSS: Extremely high durability for materials which are difficult to work with. Great abrasion resistance, high tear strength, high heat resistance.

Hardness:

Shank: HWS 60-64, HSS 62-66

Head: HWS 45-55, HSS 45-55



Prednostne dimenzije / Preferred dimensions: 71/80 and 100 mm
Druge dolžine / Other length: 60 and 90mm

Ø d1 h6	Stopnje- vanje Gradation d1	L2 +0,5	Ø d3 h6	L1+0,5			Ø d2	Tol.	r	h+0,2
				71	80	100				
0,5-0,9	0,1	7	2,0	●	●	●	3,0	±0,10	0,4+0,03	1,37
1,0-1,5				●	●	●	3,0			
1,6-2,9			3,0	●	●	●	4,5		0,6+0,04	1,80

D1 h6	a ± 0,01	b ± 0,01	d2	Tol.	d3 h6	H + 0,2 + 0,1	r + 0,5 0	L2 + 0,5 0	L1 + 0,5 + 0			
									71/80	100	60	90
			4,5	± 0,1	3,0	1,80	0,6+0,4 0		●	●	●	●
			5,5		4,0				●	●	●	●
			6,5	± 0,2	5,0				●	●	●	●
			8,0		6,0	2,23	1,0+0,5 0	Na željo stranke možne tudi druge dolžine.	●	●	●	●
Na željo stranke G=max d3			9,0		7,0				●	●	●	●
			10,0		8,0			On request other lengths are possible.	●	●	●	●
At costumers request G=max d3			12,0		10,0				●	●	●	●
			14,0		12,0				●	●	●	●
			16,0		14,0	3,23	1,5+0,5 0		●	●	●	●
			18,0		16,0				●	●	●	●
			22,0		20,0				●	●	●	●