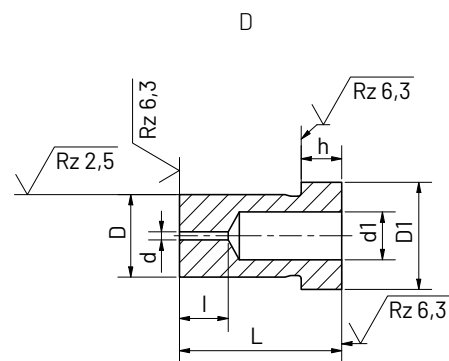
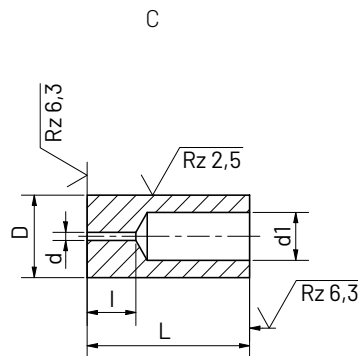


3 Rezilna matrica Cutting Bush

DIN 8977 C/D



Rezilne matrice z začetnimi izvrtinami, tip A - brez glave in tip B - z glavo.

With starter hole,
type A - headless and
type B - with head.

Dimenzije so prikazane v tabeli.

Tipi:

A - rezilna matrica s cilindričnim premerom, kaljena, napuščena in brušena.

B - matrica z glavo, kaljena, napuščena in brušena.

Material:

HSS (Hitrorezna jekla)

Na voljo tudi v drugih materialih.
Poglejte tabelo materialov.

Št. materiala:

- 1.3343(S 6-5-2)

Lastnosti materiala:

HSS: Za obdelovanje zelo trdnih ali težavnih materialov. Izjemna odpornost na drgnjenje, visoka natezna trdnost in visoka odpornost na vročino.

Trdota:

HRC 62 ± 2

Obdelava:

Kaljeno, toplotno obdekano, kompletno sestavljeno

The dimensions are shown in the table.

Types

A - with cylindrical external diameter, hardened, tempered and ground finished

B - with head, hardened, tempered and grounded.

Material:

HSS (High speed steels)

Other materials available on request, see material table.

Material Number:

- 1.3343(S 6-5-2)

Material properties:

HSS: For processing very solid or difficult materials. Exceptional abrasion resistance, high tensile strength and high resistance on heat.

Hardnes:

HRC 62 ± 2

Finish:

Hardened and tempered, outside grinded in tolerance, with insertion chamfer.

Opomba | Note

Pri rezilnih matricah za kvadratne in ovalne luknje, diagonala ne sme biti večja od $d1_{max}$.

The diagonal prole should not be larger than $d1_{max}$ on dies for square and rectangular shapes.



d	D A: n5 B: m5	D1 0 -0,25	d1 max	l2	h + 0,25 0,	L +0,5 0,			
						16	20	25	32
1,0	8	11	4	4	5	●	●	●	●
1,0	10	13	5,8	4-8		●	●	●	●
1,2	13	16	8	5-8			●	●	●
1,2	16	19	9,5				●	●	●
1,5	20	23	12	8-20			●	●	●
1,5	25	28	17,3				●	●	●
1,5	32	35	20,7				●	●	●
1,5	40	43	27,7				●	●	●
1,5	50	53	37				●	●	●